

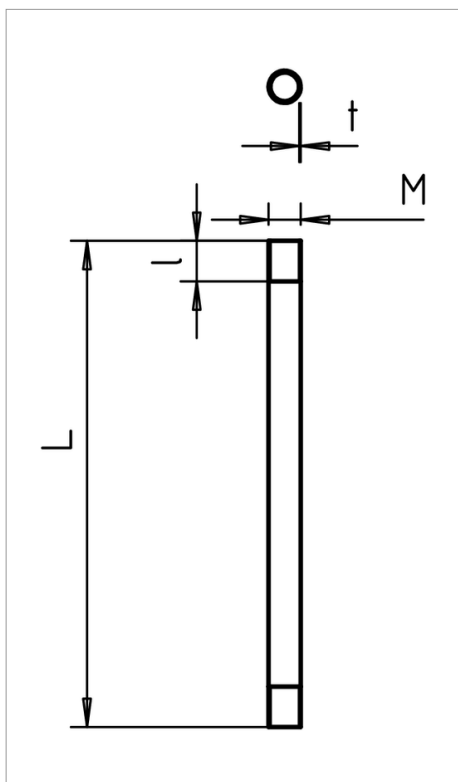
Technical data sheet

Steel armoured pipe, with thread



Electrical installation pipe to EN 61386-1 with threaded ends to DIN EN 60423 for mechanical protection of cables.

With burr-free inner wall. One connection sleeve is already screwed onto each pipe.



| Type | Dimension M | Dimension L mm | Dimension t mm | Weight kg/100 m | Pack. m | Art-No. |
|----------|-------------|----------------|----------------|-----------------|---------|---------|
| SM16 W G | M16 | 3000 | 1.4 | 50.390 | 30 | 2046861 |
| SM20 W G | M20 | 3000 | 1.6 | 72.570 | 30 | 2046862 |
| SM25 W G | M25 | 3000 | 1.6 | 92.290 | 30 | 2046863 |
| SM32 W G | M32 | 3000 | 1.6 | 120.000 | 21 | 2046864 |
| SM40 W G | M40 | 3000 | 1.6 | 151.450 | 15 | 2046865 |
| SM50 W G | M50 | 3000 | 1.6 | 190.890 | 15 | 2046866 |
| SM63 W G | M63 | 3000 | 1.8 | 271.550 | 9 | 2046867 |

St Steel

G Electro-galvanised

/100

