

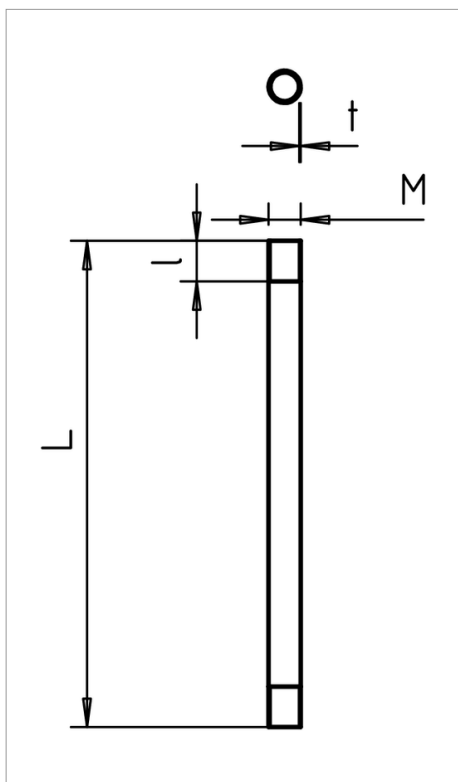
# Technical data sheet

## Steel armoured pipe, with thread



Electrical installation pipe to EN 61386-1 with threaded ends to DIN EN 60423 for mechanical protection of cables.

With burr-free inner wall. One connection sleeve is already screwed onto each pipe.



Type	Dimension M	Dimension L mm	Dimension t mm	Weight kg/100 m	Pack. m	Art-No.
SM16 W G	M16	3000	1.4	50.390	30	2046861
SM20 W G	M20	3000	1.6	72.570	30	2046862
SM25 W G	M25	3000	1.6	92.290	30	2046863
SM32 W G	M32	3000	1.6	120.000	21	2046864
SM40 W G	M40	3000	1.6	151.450	15	2046865
SM50 W G	M50	3000	1.6	190.890	15	2046866
SM63 W G	M63	3000	1.8	271.550	9	2046867

**St** Steel

**G** Electro-galvanised

/100

