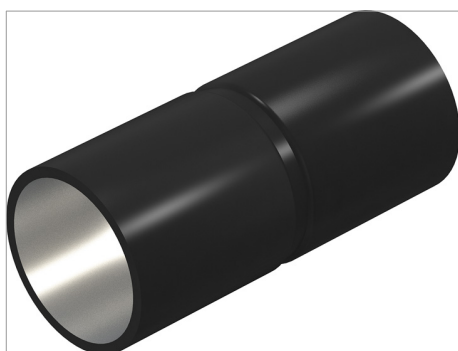
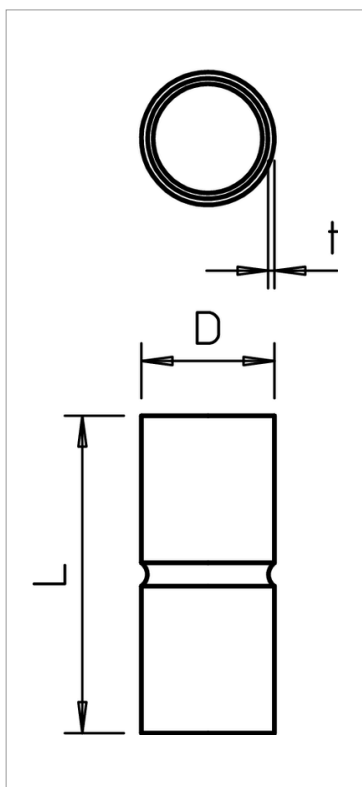


# Technical data sheet

## Stapa pipe connection sleeve, without thread, black, powder-coated



Accessory part: plug-in sleeve for the connections between electrical installation pipes. With burr-free inner wall.



| Type     | Dimensi<br>on M | Dimensi<br>on L<br>mm | Dimensi<br>on D<br>mm | Dimensi<br>on t<br>mm | Colour | Weight<br>kg/100<br>pcs. | Pack.<br>pcs | Art.-No.    |
|----------|-----------------|-----------------------|-----------------------|-----------------------|--------|--------------------------|--------------|-------------|
| SV16W SW | M16             | 50                    | 18.6                  | 1                     | Black  | 2.400                    | 25           | 204658<br>2 |
| SV20W SW | M20             | 60                    | 23.1                  | 1.2                   | Black  | 4.000                    | 50           | 204658<br>3 |
| SV25W SW | M25             | 60                    | 28.1                  | 1.2                   | Black  | 5.200                    | 50           | 204658<br>4 |
| SV32W SW | M32             | 70                    | 35.2                  | 1.2                   | Black  | 7.200                    | 50           | 204658<br>5 |
| SV40W SW | M40             | 80                    | 43.8                  | 1.5                   | Black  | 13.200                   | 25           | 204658<br>6 |
| SV50W SW | M50             | 100                   | 54                    | 1.5                   | Black  | 20.000                   | 10           | 204658<br>7 |
| SV63W SW | M63             | 100                   | 67                    | 1.5                   | Black  | 26.000                   | 5            | 204658<br>8 |

**St** Steel

/100

