

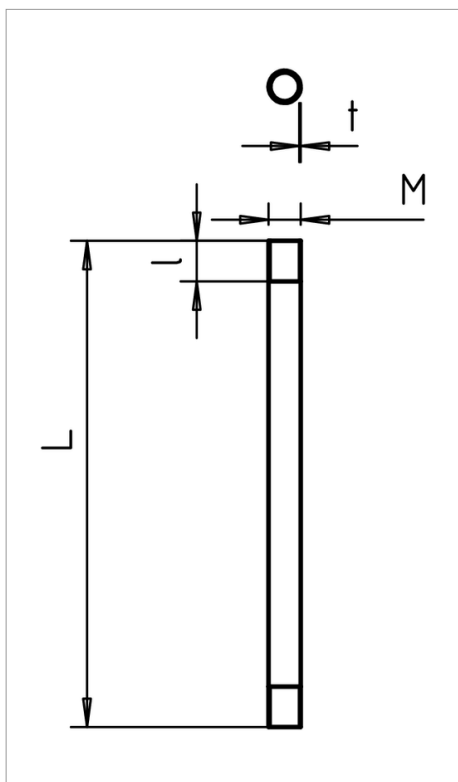
Technical data sheet

Steel armoured pipe, with thread



Electrical installation pipe to EN 61386-1 with threaded ends to DIN EN 60423 for mechanical protection of cables.

With burr-free inner wall. One connection sleeve is already screwed onto each pipe.



Type	Dimension M	Dimension L mm	Dimension t mm	Weight kg/100 m	Pack. m	Art-No.
SM16W FT	M16	3000	1.4	54.000	30	2046533
SM20W FT	M20	3000	1.6	79.000	30	2046534
SM25W FT	M25	3000	1.6	99.000	30	2046535
SM32W FT	M32	3000	1.6	130.000	21	2046536
SM40W FT	M40	3000	1.6	164.000	15	2046537
SM50W FT	M50	3000	1.6	206.000	15	2046538
SM63W FT	M63	3000	1.8	294.000	9	2046540

St Steel

FT Hot-dip galvanised

/100

