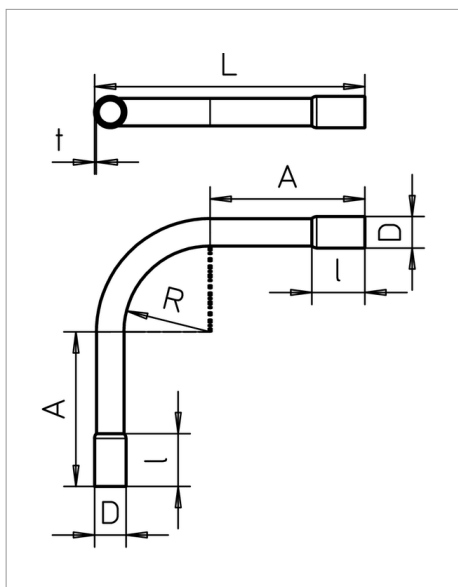


Technical data sheet

Aluminium pipe bend, without thread



Accessory part: 90° bend with moulded sleeves, for electrical installation pipes according to EN 61386-1. With burr-free inner wall.



Type	Dimension M	Dimension L mm	Dimension t mm	Dimension R mm	Weight kg/100 pcs.	Pack. pcs	Art.-No.
SB16 W ALU	M16	151	1.2	56	4.000	15	2046012
SB20 W ALU	M20	171	1.2	70	6.000	25	2046013
SB25 W ALU	M25	209	1.3	90	9.000	25	2046014
SB32 W ALU	M32	253	1.3	115	12.000	20	2046015
SB40 W ALU	M40	302	1.4	145	20.000	15	2046016
SB50 W ALU	M50	360	1.4	180	31.000	5	2046017
SB63 W ALU	M63	425	1.7	225	45.000	3	2046018

Alu Aluminium

/100

