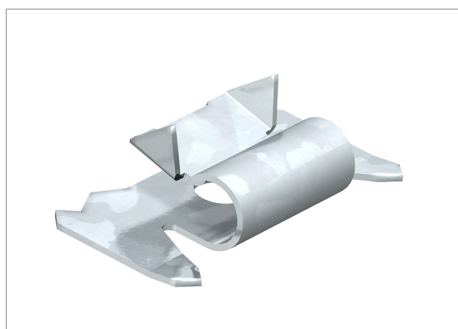


# Technical data sheet

## Rastklammer für Oberteile 80-mm-Systemöffnung

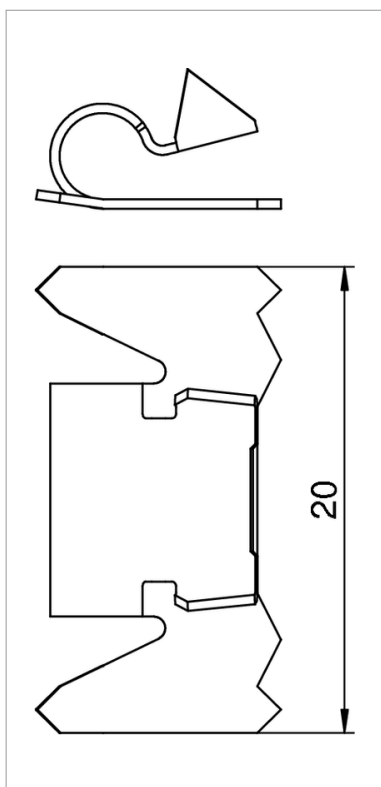


Locking bracket for the mechanical and electrical connection of trunking covers and trunking bases.

When making cover cut-outs, observe the following minimum quantities.

LL=1,000–2,000 mm: 6 units

L>2,000 mm: 8 units



Type	Pack. pcs	Weight kg/100 pcs.	Art.-No.
RKV3V	20	0.120	6288700

/pc.